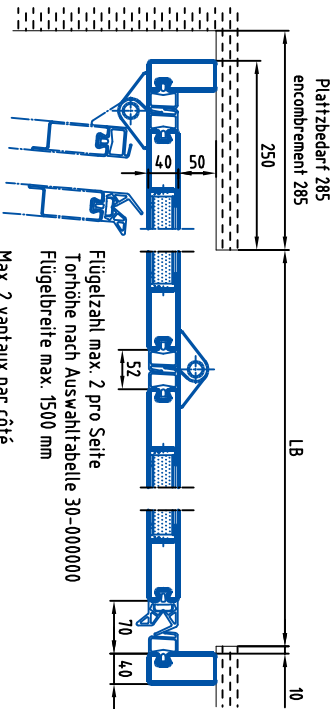
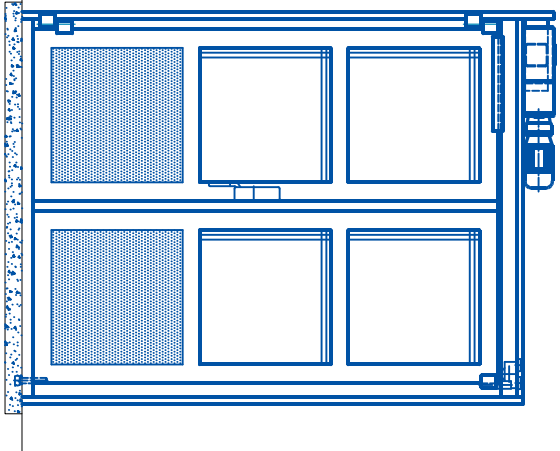
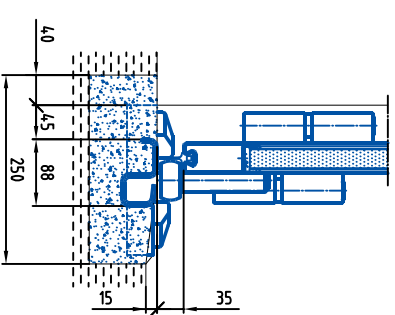
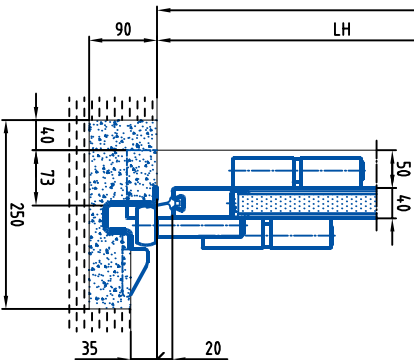
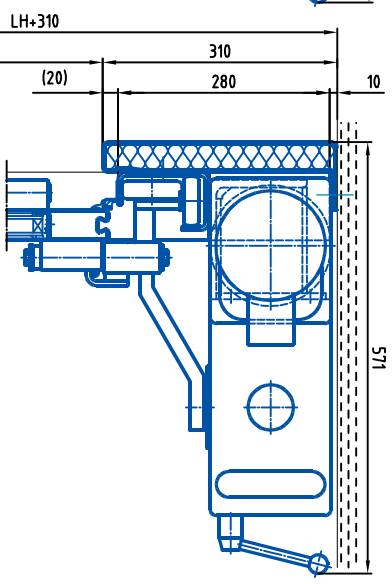
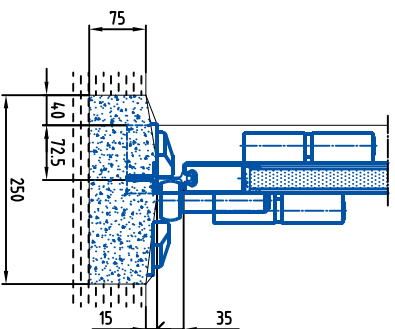
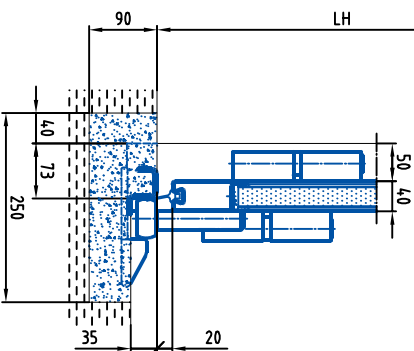
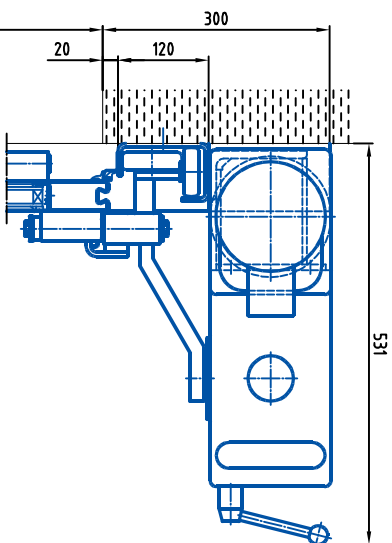
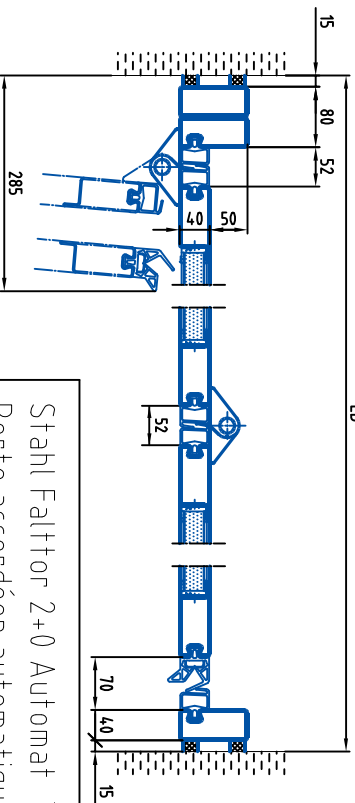


MAASSE IN "mm"

DIMENSIONS EN "mm"



Flügelzahl max.: 2 pro Seite  
 Torhöhe nach Auswahlabelle 30-000000  
 Flügelbreite max.: 1500 mm  
 Max. 2 vantaux par côté  
 Hauteur de porte selon diagramme 30-000000  
 Largeur d'élément max.: 1500 mm



schwellenlos  
 Torgrösse begrenzt  
 Sans seuil inférieur  
 les dimensions sont  
 limitées

ÄNDERUNGEN, SATZ- UND DRUCKFEHLER VORBEHALTEN  
 SOUS RESERVE DE MODIFICATIONS ET D'ERREURS TYPOGRAPHIQUES OU D'IMPRESSIONS

Stahl Falltor 2+0 Automat Typ: AFTS 40  
 Porte accordéon automatique en acier

Datum:	18.02.03
Zeichn.Nr.:	30-100135
Plan N°:	A

**Bator**  
 T O R S Y S T E M E

CH-3360 Herzogenbuchsee  
 Telefon 062 956 12 12  
 Telefax 062 956 12 13  
 http://www.bator.ch  
 E-Mail bator@bator.ch