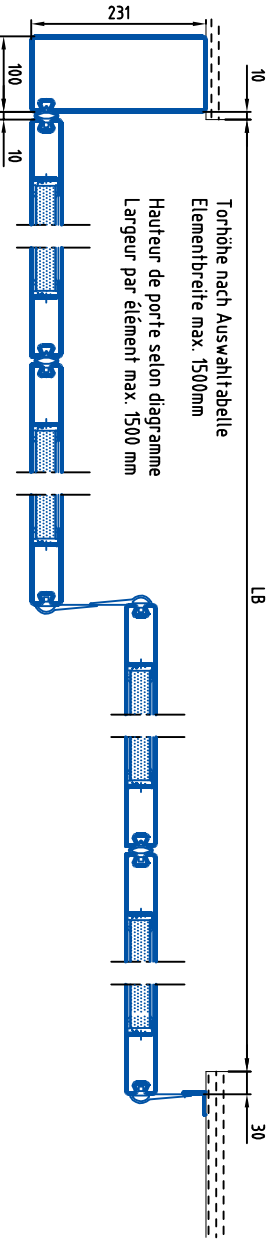
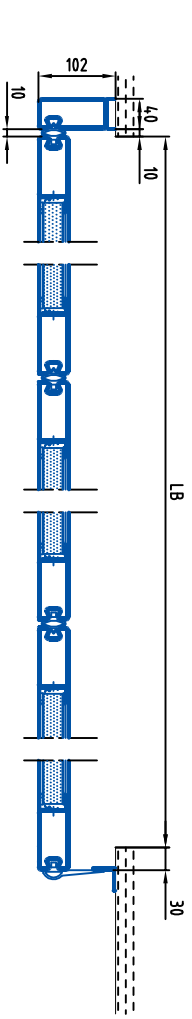
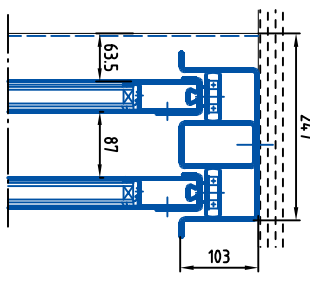
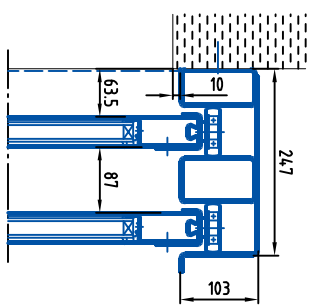
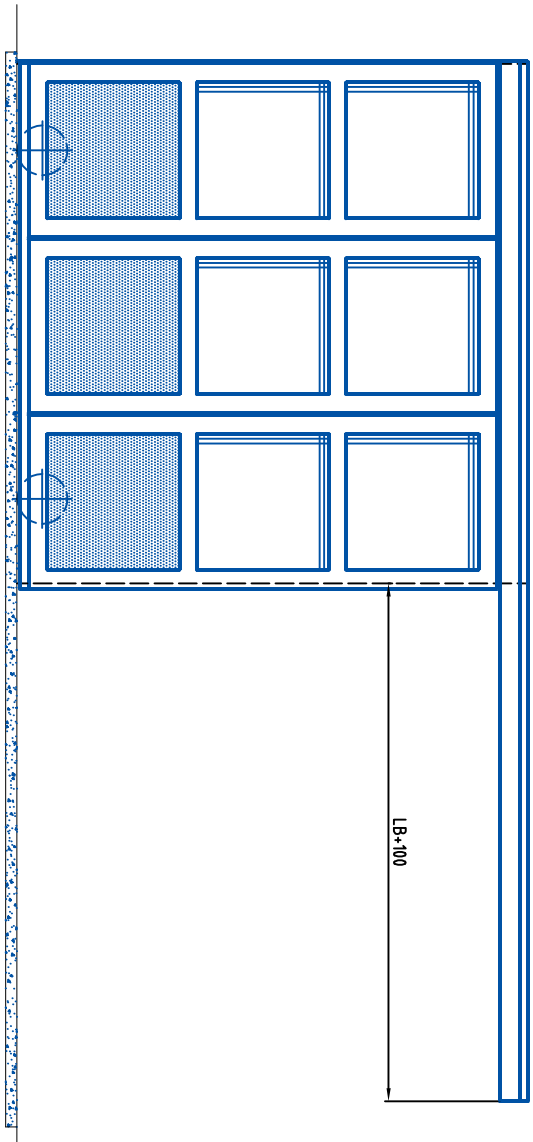
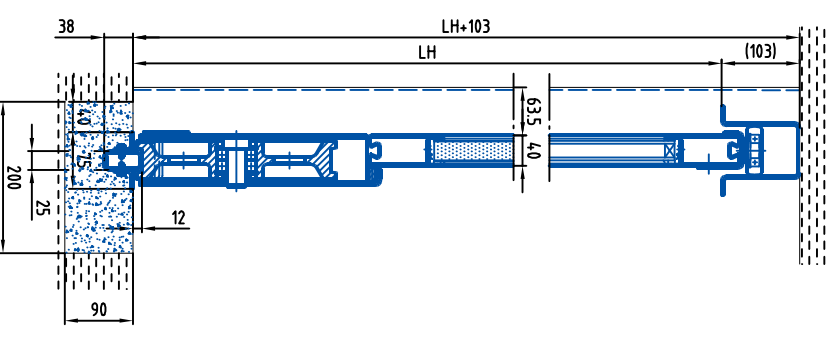
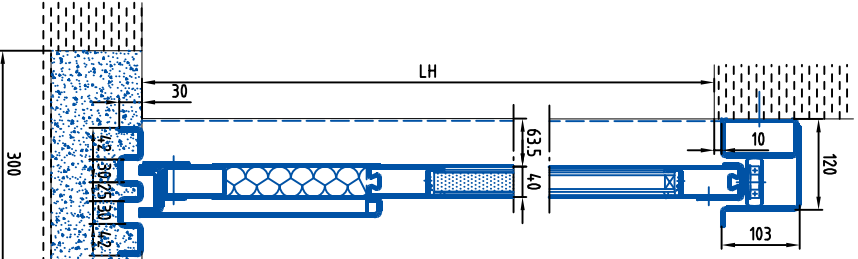


MASSE IN "mm"  
DIMENSIONS EN "mm"

ÄNDERUNGEN, SATZ- UND DRUCKFEHLER VORBEHALTEN  
SOUS RÉSERVE DE MODIFICATIONS ET D'ERRERURS TYPOGRAPHIQUES OU D'IMPRESSIIONS



Torhöhe nach Auswahltablette  
Elementbreite max. 1500mm  
Höheur de porte selon diagramme  
Largeur par élément max. 1500 mm



Stahl Schiebetor Hand Typ E40 LWU  
Porte coulissante manuelle roulante en bas

Datum: 03.07.03  
Date:  
Zeichn.Nr.:  
Plan N: 30-100123 A

**Bator**  
T O R S Y S T E M E  
CH-3360 Herzogenbuchsee  
Telefon 062 956 12 72  
Telefax 062 956 12 73  
http://www.bator.ch  
E-Mail bator@bator.ch