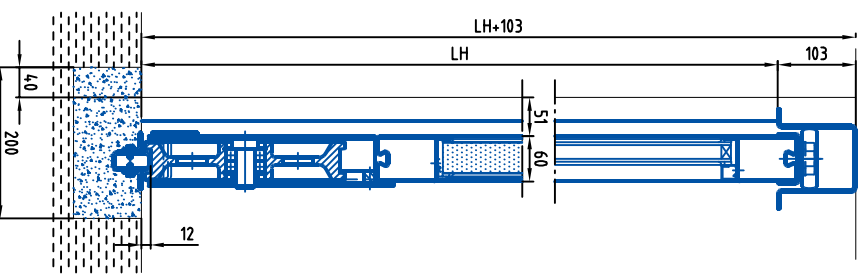
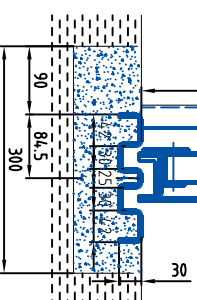
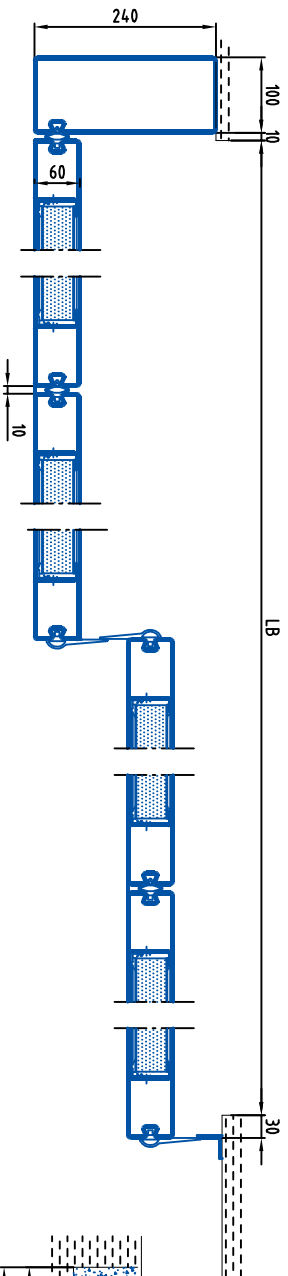
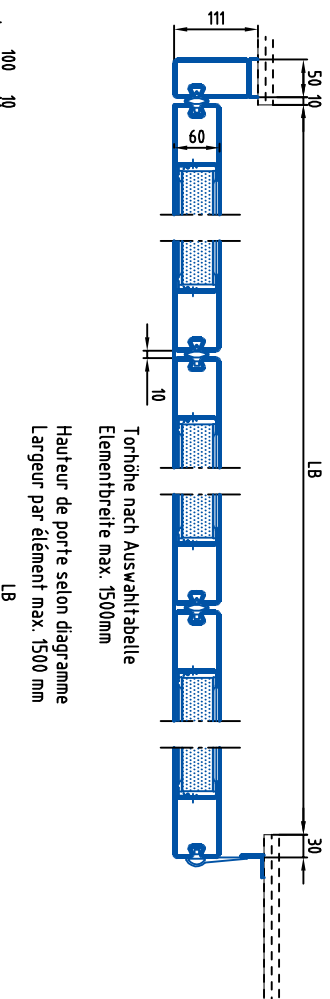
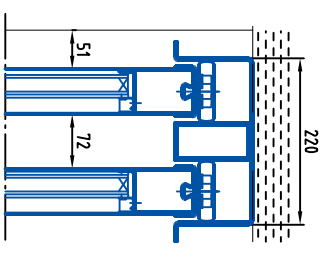
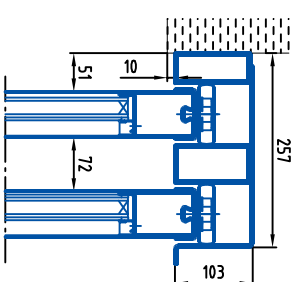
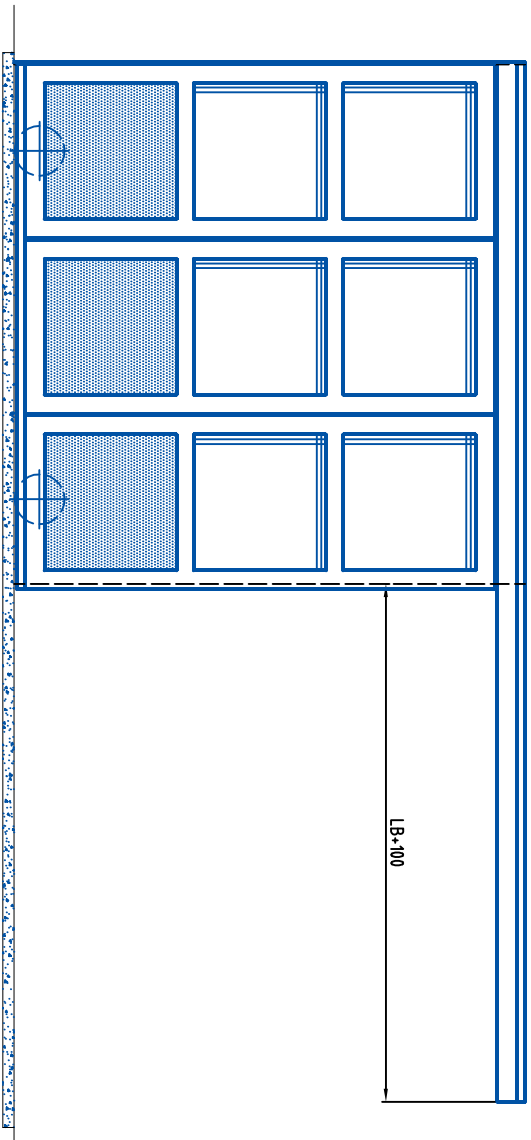


MASSE IN "mm"
DIMENSIONS EN "mm"

ÄNDERUNGEN, SATZ- UND DRUCKFEHLER VORBEHALTEN
SOUS RESERVE DE MODIFICATIONS ET D'ERREURS TYPOGRAPHIQUES OU D'IMPRESSIIONS



Stahl Schieberotor Hand Typ: 60E LWU
Porte coulissante manuelle roulante en bas

Datum:
Date:
Zeichn.Nr.:
Plan N: 30-100122

Bator
T O R S Y S T E M E

CH-3360 Herzogenbuchsee
Telefon 062 956 12 12
Telefax 062 956 12 13
http://www.bator.ch
E-Mail bator@bator.ch